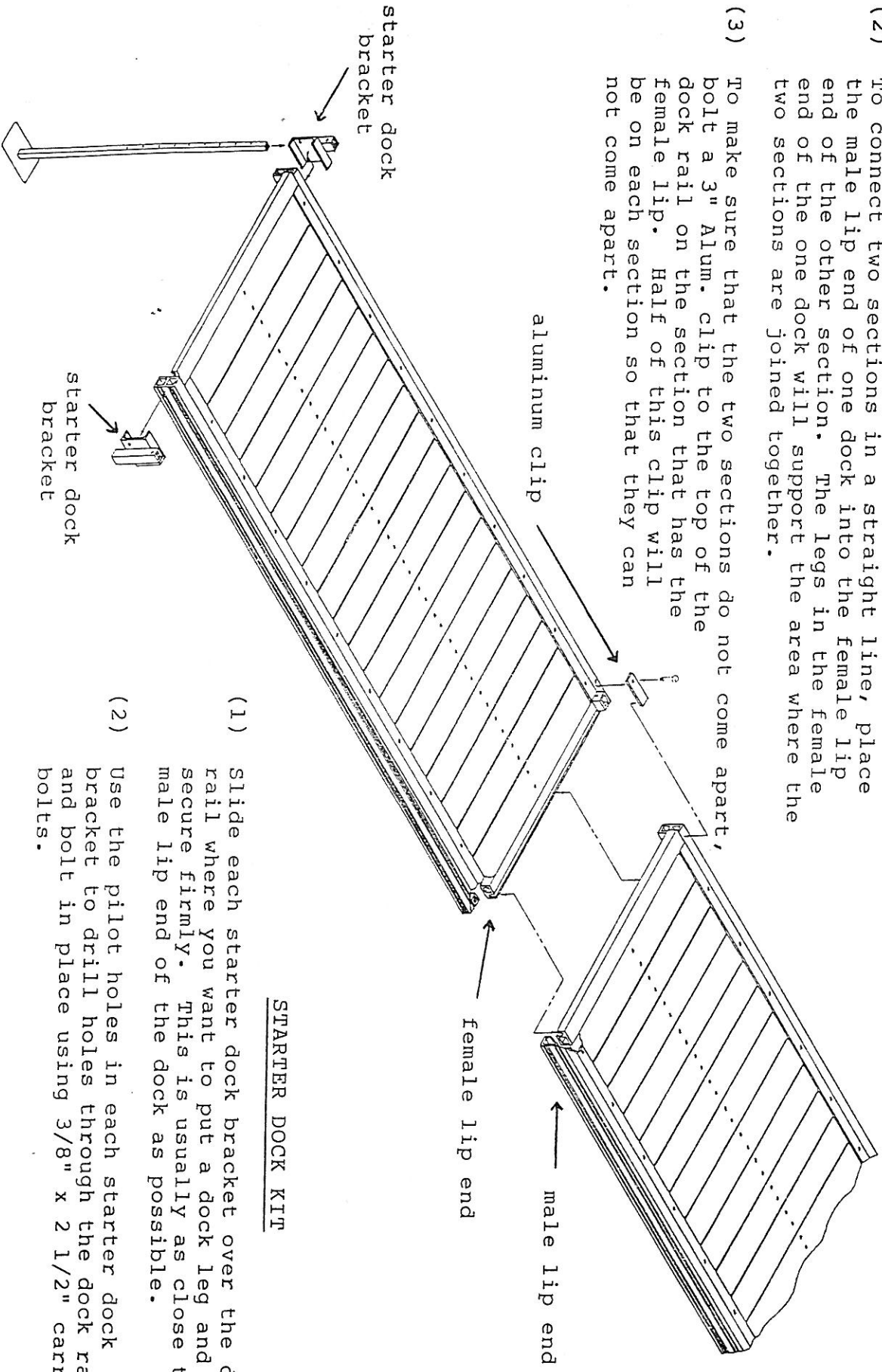


REGULAR STANDING DOCK

(1) Each section of regular standing dock has (1) end that has a male lip (facing down) and (1) end that has a female lip (facing up). The female lip end also has (2) leg pockets welded into it.

(2) To connect two sections in a straight line, place the male lip end of one dock into the female lip end of the other section. The legs in the female end of the one dock will support the area where the two sections are joined together.

(3) To make sure that the two sections do not come apart, bolt a 3" Alum. clip to the top of the dock rail on the section that has the female lip. Half of this clip will be on each section so that they can not come apart.



STARTER DOCK KIT

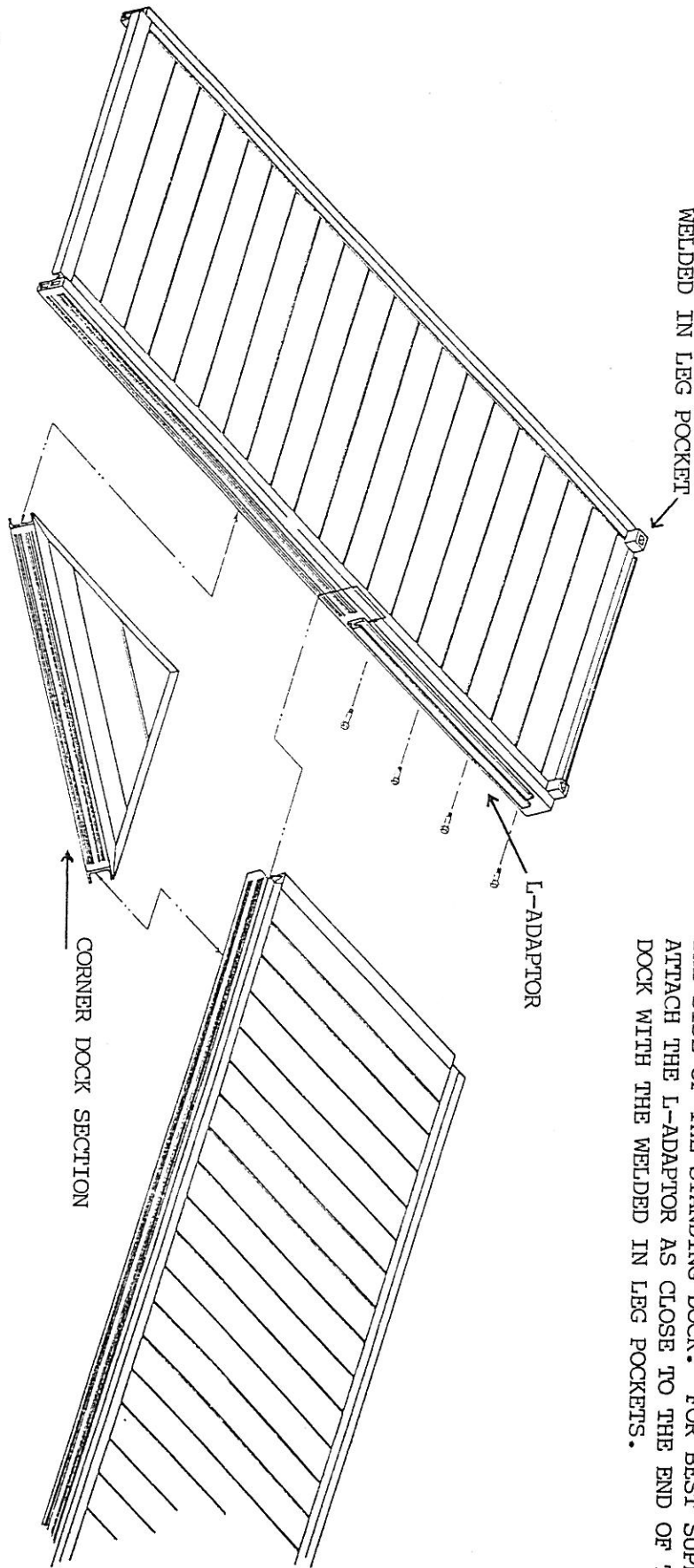
- (1) Slide each starter dock bracket over the dock rail where you want to put a dock leg and secure firmly. This is usually as close to the male lip end of the dock as possible.
- (2) Use the pilot holes in each starter dock bracket to drill holes through the dock rail and bolt in place using 3/8" x 2 1/2" carriage bolts.

L-ADAPTOR

NOTE

L-ADAPTORS ARE USED TO ALLOW STANDING DOCK TO MAKE RIGHT ANGLES.

- (1) BOLT THE L-ADAPTOR (with the lip facing up) TO THE SIDE OF THE STANDING DOCK. FOR BEST SUPPORT, ATTACH THE L-ADAPTOR AS CLOSE TO THE END OF THE DOCK WITH THE WELDED IN LEG POCKETS.

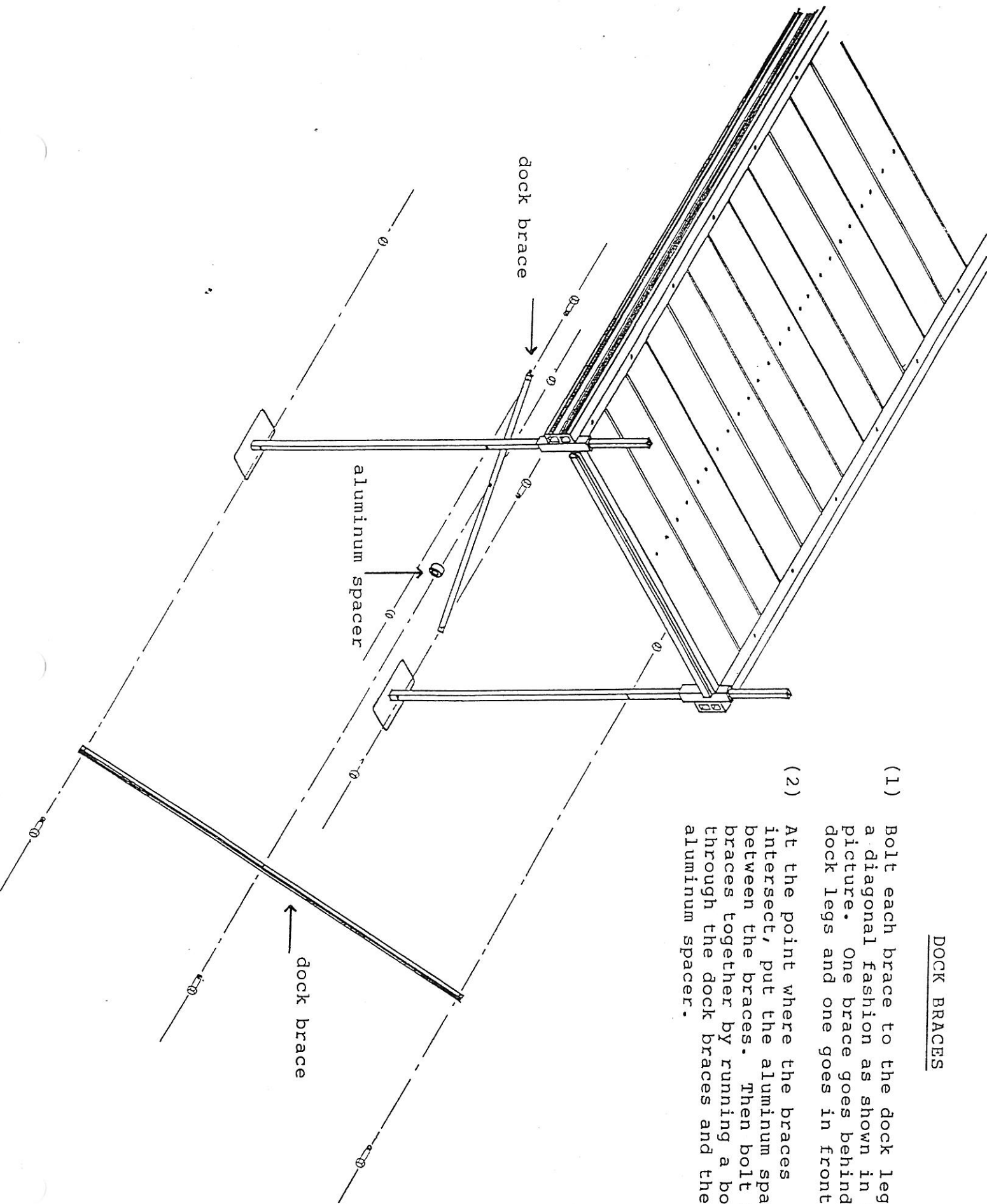


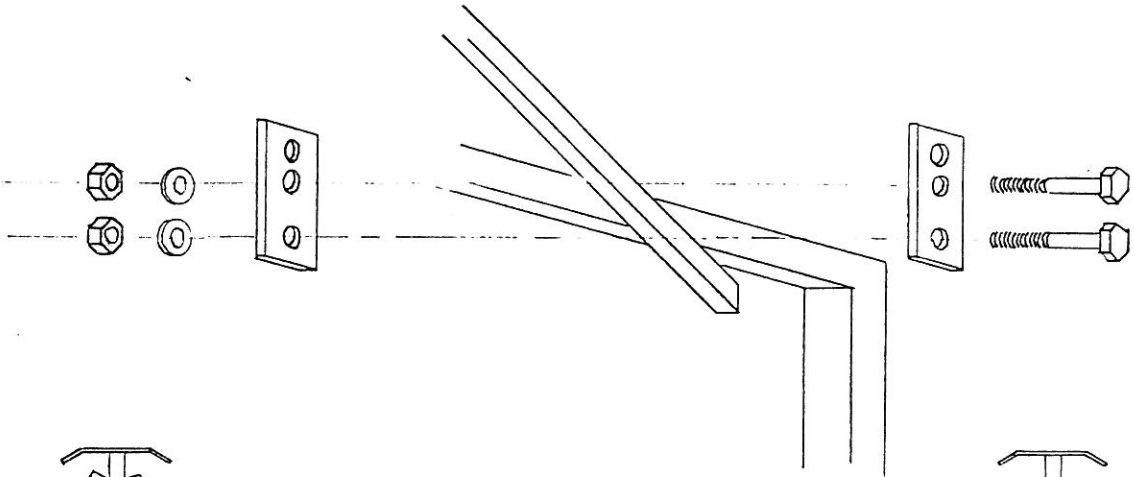
CORNER DOCK SECTION

SLIDE THE CORNER SECTION IN PLACE AND HOLD FIRMLY IN USING VISE-GRIPS OR CLAMPS. THEN BOLT THE CORNER SECTION TO THE DOCKS THROUGH THE DOCK RAIL ON EACH SECTION OF DOCK.

DOCK BRACES

- (1) Bolt each brace to the dock legs in a diagonal fashion as shown in the picture. One brace goes behind the dock legs and one goes in front.
- (2) At the point where the braces intersect, put the aluminum spacer between the braces. Then bolt the braces together by running a bolt through the dock braces and the aluminum spacer.





2" x 6" CLAMP (B)
 1/2" x 5 BOLTS (B)

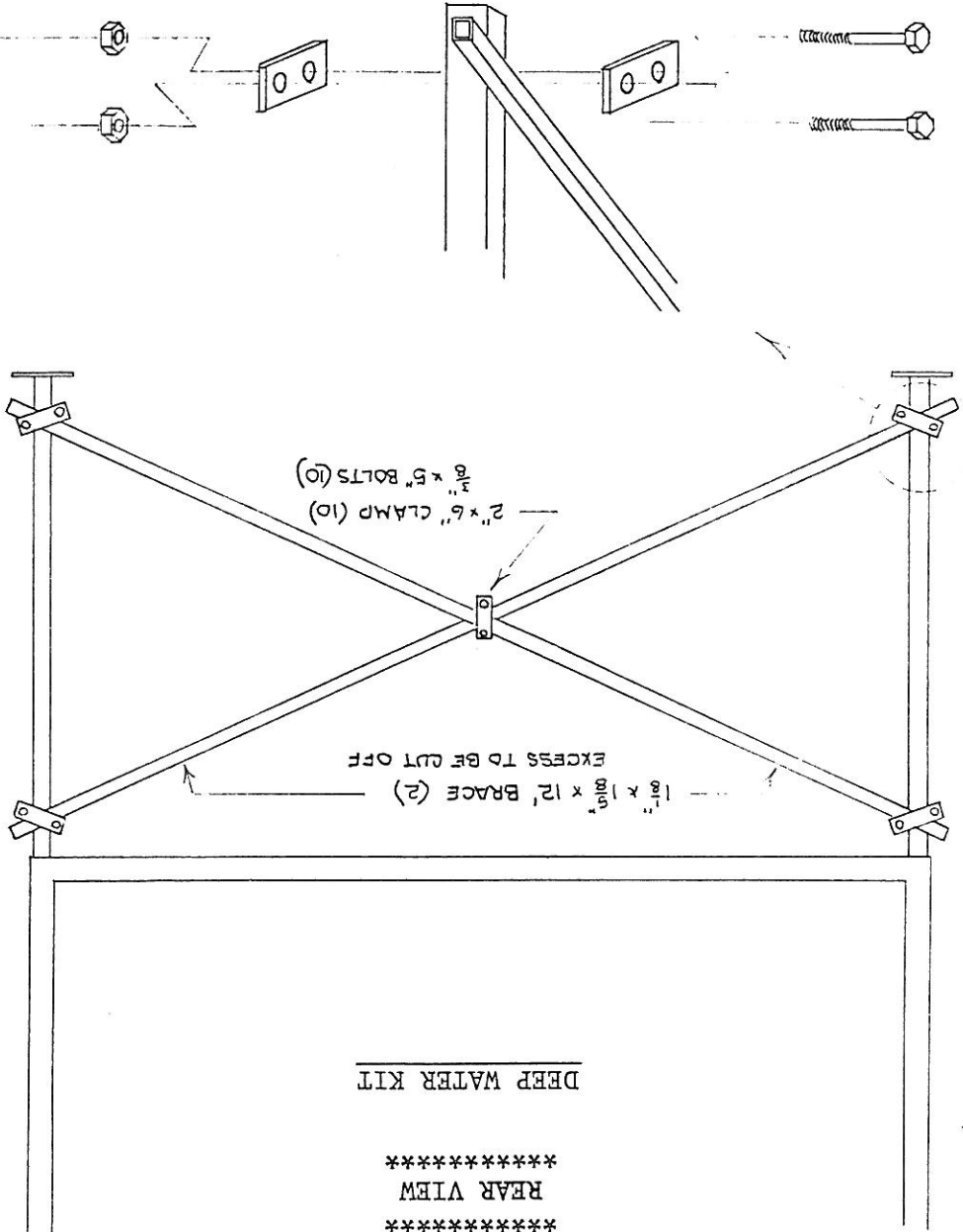
1 1/8" x 1 5/8" x 12' BRACE (2)
 EXCESS TO BE CUT OFF

DEEP WATER KIT

 SIDE VIEW

 REAR VIEW

DEEP WATER KIT



*This kit must be used with any lift that has legs longer than the standard 3ft. length.

*We recommend that you purchase (2) Deep Water Kits and mount them as shown - (rear view & side view).

(OVER)

SHOREMASTER

Universal-Dock Deep Water Brace

